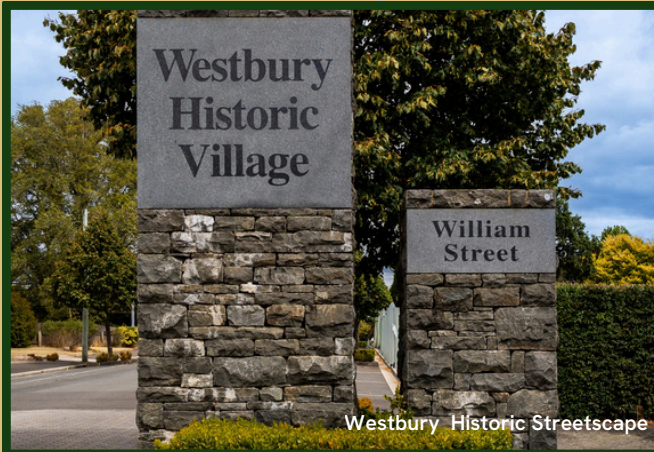


# MEANDER INTO WESTBURY

A Family-Friendly Heritage Escape in the  
Heart of the Great Western Tiers  
3 Day / 2 Night Self-Drive Itinerary



# MEANDER INTO WESTBURY



**Westbury, Tasmania - The Gateway to the North of Tasmania.**

**Known for its cool-climate wines, distilleries, breathtaking landscapes, rich heritage, outstanding local produce, rural lifestyle and a slower, more relaxed pace of life.**

Set beneath the dramatic backdrop of the Great Western Tiers, the historic village of Westbury offers families a welcoming place to slow down and explore and experience the warmth of a true Tasmanian town.

Founded in the early 1800s, with a strong Irish influence, the town retains much of its original charm, with leafy streets, Georgian buildings, white picket fences and beautiful gardens creating a setting that feels like stepping into a storybook village.

Why you'll love it - with its safe walkable streets, friendly community atmosphere and easy access to nature, Westbury invites visitors to experience the simple joys of regional Tasmanian life — where history, agriculture and small-town hospitality come together to create a memorable family escape.

Just a short drive from Launceston and ideal for travellers exploring by car or caravan, a weekend in Westbury captures something special — the simple joy of experiencing life like a local.

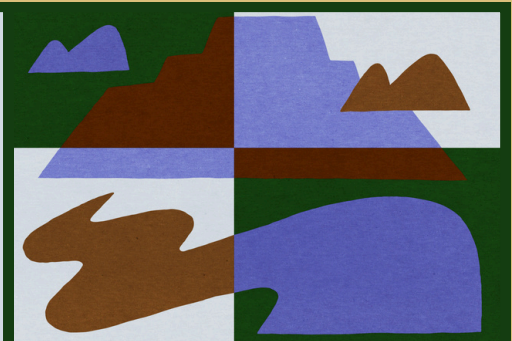
## DRIVE TIMES

**Devonport** | Spirit of Tasmania Ferry | 45 minutes |

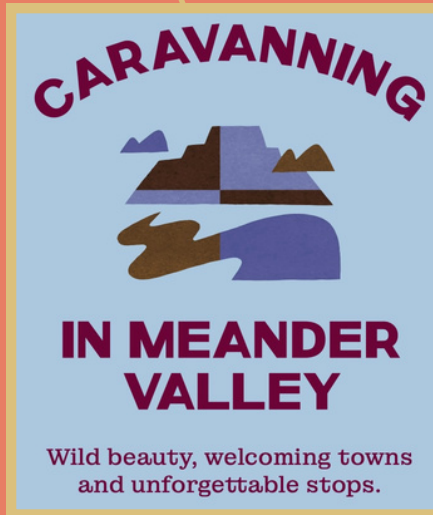
**Launceston Airport** | 30 Minutes |

**Hobart** | 2.5 Hours |

*\*drive times will be longer when towing a caravan*



# MEANDER INTO WESTBURY



For families travelling by caravan and road tripping through northern Tasmania, Westbury is an ideal base. Children can roam and play on the Village Green beneath magnificent old trees, follow the Heritage Trail to discover the town's history, and enjoy simple country pleasures like spotting ponies, tractors and farm animals in the surrounding paddocks.

Westbury showcases the best of regional Tasmania — from wandering historic streets and discovering local produce to wildlife encounters, country events and artisan distilling whilst embracing slow travel and meaningful connections with the community, that makes visitors feel less like tourists and more like locals.

## GREEN + RV FRIENDLY

**EV Charging Stations** - Meander Valley Council, Westbury | Westbury IGA

**RV Dump Point** - Westbury Sports Centre | Westbury Deloraine Apex Caravan Park

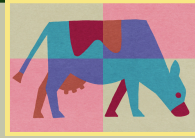
**TasWater Water Filling Stations** - Deloraine | Westbury



Hagley RV Farm Stay

# MEANDER INTO WESTBURY

3 day 2 night family friendly itinerary



## Day One - Heritage + Nature

### Morning

Explore Westbury's Village Life

For travellers arriving from Devonport (45 minutes), take the scenic drive through northern Tasmania's foodie heartland, stopping at local favourites such as Ashgrove Cheese, Christmas Hills Raspberry Farm and the House of Anvers Chocolate— perfect for stocking up for self-catering and to fill your bellies along the way.

Arriving in Westbury feels like stepping into a living piece of Tasmanian history. Founded in the early 1800s as a military garrison town, and influenced by traditional English village planning, the town retains its colonial charm with Georgian buildings, white picket fences, rose-filled gardens and leafy streets.

Begin your visit with a relaxed wander along the Westbury Heritage Trail (1-2km). Stroll past historic cottages and churches along historic Lyall and William Streets before arriving at the Village Green — one of the last traditional village greens in Australia. Shaded by magnificent old oak trees, this beautiful open space has been the social heart of the town for nearly two centuries and is the perfect place for families to relax while children roam and play and explore the playground.

Along the way, stop at Holy Trinity Catholic Church, built in the mid-1800s and reflecting the strong Irish heritage of many early settlers who helped shape the community. Nearby St Andrew's Anglican Church and the surrounding historic streetscape offer a glimpse into what life in a colonial Tasmanian village looked like nearly 200 years ago.



Holy Trinity Catholic Church

### VILLAGE HIGHLIGHTS

Village Green |  
Holy Trinity Catholic Church |  
Historic Lyall & William Streets |  
Westbury Town Common |  
Westbury Big Wickets |  
Westbury Silhouette Trail |

# MEANDER INTO WESTBURY

3 day 2 night family friendly itinerary



## Day One - Heritage + Nature Afternoon

Explore Nature



Drop by one of the local Cafes for lunch then head 10 minutes south of Westbury to Hagley RV Farm Stay for your home away from home set-up. Make sure to keep an eye out for local produce stalls along the way or stop in at the IGA - locally owned supermarket for supplies. The Meander Valley is renowned for its agricultural richness — apples, berries, cheeses and small-batch products, making even a simple picnic a celebration of local flavours.

After settling into your weekend home, pack the kayak and bikes and embrace nature for the afternoon, driving through the lush agricultural land passing by sheep, cows and seasonal crops. Just a 20-minute drive away, Four Springs Lake is a peaceful bushland retreat covering around 170 hectares. An 8km walking and cycling trail circles the lake, making it the perfect spot to picnic beneath tall eucalypts, paddle a kayak across the calm water, try trout fishing, ride bikes along the lakeside track and watch birdlife, all set against the dramatic backdrop of the Great Western Tiers.

**Traveller Tip:** BYO Kayaks | Fishing Gear | Bicycles | Bird Watching Binoculars

### FAMILY FRIENDLY SHORT WALKS

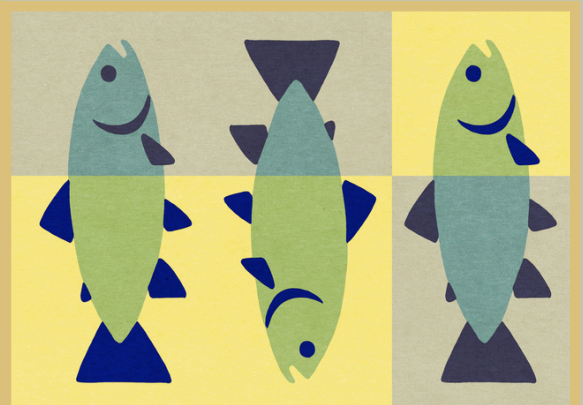
Liffey Falls | 45 min return | Grade 2 | 2 km |

Westbury Silhouette Trail | 1 hr circuit | Grade 1 | 3.5km |

Deloraine River Walk | 30 min return | Grade 1 | 1.5km

Tulampanga/Alum Cliffs | 40 min return | Grade 2 | 1.6km |

Montana Falls | 45 min return | Grade 2 | 1.8km |



**MADE BY MEANDER VALLEY | MEANDER INTO WESTBURY**

# MEANDER INTO WESTBURY

3 day 2 night family friendly itinerary



## Day One - Heritage + Nature Evening

Village Life



Finish the day with a relaxed dinner in town. Enjoy a classic pub meal at the family-friendly [Westbury Hotel](#), enjoy a perfectly cooked steak at [No.10 Westbury](#), the kids will love their kids menu or create your own feast with delicious local produce from the [Westbury Gourmet Butcher](#) and enjoy a self-catered dinner at your accommodation.

Or every Wednesday night, grab the picnic blanket and head down to the Village Green to enjoy kid-friendly meals from the local food trucks.

As evening settles over the village, slow down and enjoy the peaceful rhythm of country life — take a gentle stroll through the quiet streets or look up to the clear Tasmanian skies for a little stargazing before a restful night.



### VILLAGE HIGHLIGHTS

[Western Tiers Distillery](#)

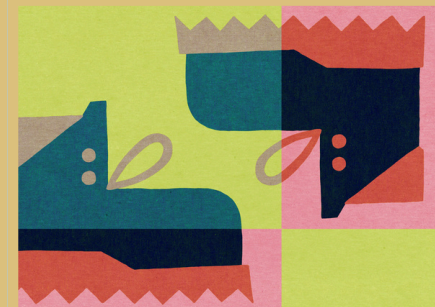
[Pearns Steam World](#)

[Little Marney's Gifts](#)

[Love Lucy Boots](#)

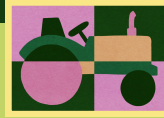
[Rustville](#)

[Bexs Blades + Beards](#)



# MEANDER INTO WESTBURY

3 day 2 night family friendly itinerary



Love Lucy Boots

Love Lucy Boots

## Day Two - Heritage + Community

### Morning ——— Village Life ———

Start the morning like a local with a visit to the Westbury Community Market (held monthly) where stalls showcase local produce, handmade goods and the friendly spirit of the town. Take time to explore the historic streets and volunteer-run history rooms. Then stretch the legs and walk to the nearby Westbury Town Common, a rare surviving piece of shared grazing land established in the early 1800s, offering a glimpse into how early settlers lived and worked together in this carefully planned village community.

If visiting on a Saturday, join locals at the Town Common Parkrun, a free weekly 5km walk or run welcoming people of all ages and abilities — a wonderful way to experience Westbury's strong community atmosphere.

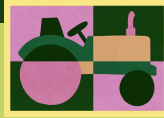
Afterwards, stop for a coffee or hot chocolate and pastry at much-loved locals favourite, Love Lucy Boots, a cosy cottage wine bar and takeaway espresso stop that perfectly reflects the warm Tasmanian hospitality of the village, before continuing your relaxed stroll through town.

**THIS PATCH  
OF OURS**

MADE BY MEANDER VALLEY | MEANDER INTO WESTBURY

# MEANDER INTO WESTBURY

3 day 2 night family friendly itinerary



## Day Two - Heritage + Community

Afternoon

Local Discoveries

### Locals Tip:

Keep an eye out for the monthly Vintage Tractor Run, when these historic machines rumble back to life and roll through the streets of Westbury.

After your coffee stop, continue exploring Westbury's charming heritage village centre. Wander past the Westbury Big Wickets and cricket ground, where you might catch the local team — the Westbury Shamrocks — in action. Browse the boutique local shops and soak up the relaxed country atmosphere that makes this historic village so welcoming for families.

A short walk brings you to the award-winning Western Tiers Distillery, where parents can learn all about whisky with a Distillery Tour, followed by a tasting of locally crafted Tasmanian gin or whisky, while the kids enjoy pizza, the views of the Great Western Tiers and a book from the local Book Library (located outside Pearn's Steam World).

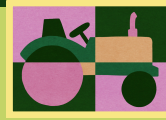
In the afternoon, head to Pearn's Steam World, one of the region's most fascinating attractions. This remarkable museum is filled with huge steam engines, vintage tractors and historic machinery that once powered Tasmania's farms and rural communities. With more than 200 exhibits — including over 100 tractors — it's a place where both kids and adults are amazed by the scale, sounds and stories of these incredible machines.

Just around the corner, Little Marney's Gifts for Town & Country offers a charming stop for visitors to browse a curated collection of gifts, homewares and locally inspired treasures. Surrounded by gardens and farmland, it's a relaxed place to wander, enjoy an ice-cream and discover something special to take home.



# MEANDER INTO WESTBURY

3 day 2 night family friendly itinerary



## Day Two - Heritage + Community

### Evening

Live life like a local

For dinner, take a short 8-minute drive to the nearby village of Carrick, one of northern Tasmania's earliest settlements. Here you'll find the historic The Carrick Inn Hotel (est. 1833) — one of Tasmania's oldest continually operating, family-friendly country pubs. Enjoy a relaxed pub meal in this charming heritage building that has long been a welcoming stop for travellers moving through the Meander Valley - kids will love their desserts!



Local Produce



Little Marney's Gifts for Town + Country

## SEASONAL EVENTS

Northern Tasmania is an ever-changing kaleidoscope of experiences. Be sure to check the local Events Calendar so you don't miss some of our favourite seasonal festivals, markets and community celebrations.

### Foodie Lovers

Tasmanian Heirloom Festival | Hop to Harvest Festival | Hagley Berries - Pick Your Own |  
Local Foraging and Produce Stalls | Festivale

### Creatives

Party in the Paddock | AgFest | St Patrick's Festival | Tasmanian Craft Fair |

### Kid Friendly

GoatFest | SteamFest | Wednesday Night Skate | Saturday Morning Cricket |  
Westbury Library StoryTime | Tasmanian Tractor Pull |



# MEANDER INTO WESTBURY



3 day 2 night family friendly itinerary

## Day Three - Heritage + Nature

### Morning

———— Historic Walk + Pioneer Cemetery ————

Start the morning with a hearty self-catered breakfast, a classic big breakfast at the [Hub Cafe](#) or enjoy a [Love Lucy Boots](#) ham & cheese croissant and coffee (hot chocolate for the kids) before a gentle walk along the [Silhouette Trail](#), beginning near Lyall Street and the Village Green. This flat, family-friendly loop winds through Westbury's historic streets, past colonial cottages, heritage churches and silhouette sculptures that tell the story of the town's early settlers. Curious young explorers may also enjoy a short stop at the nearby Pioneer Cemetery - Taylor Street, where Westbury's colonial past can be discovered.

Take a stroll or bike ride through the village streets, browse small boutique local shops and admire the beautifully preserved architecture. With children riding bikes, playing on the green and exploring playgrounds, Westbury offers something increasingly rare — the simple pleasures of country life, set beneath the dramatic backdrop of the Great Western Tiers.

### FAMILY FRIENDLY ACCOMMODATION

[Hagley RV Farm Stay](#)

[Fitzpatricks Inn](#)

[Gingerbread Cottages](#)

[Thornby Farm Stay](#)

[Coach House at The White House](#)



Westbury Giant Cricket Wickets

# MEANDER INTO WESTBURY



3 day 2 night family friendly itinerary

## Day Three - Heritage + Nature

Afternoon  Wildlife Adventures

Take a scenic 30-minute drive north to [Trowunna Wildlife Sanctuary](#), a place where nature and nurture blend. Known across the globe for its dedication to wildlife conservation, Trowunna offers a connection to Tasmania's unique and precious wildlife. You'll have the opportunity to meet a Tasmanian Devil up close, cuddle a curious Wombat, and witness the powerful spectacle of a Devil's social feeding—an unforgettable insight into the natural world of these remarkable animals. Take a moment to slow down, breathe in the fresh country air, and feel the heartbeat of Tasmania's wild heritage.



Trowunna Wildlife Sanctuary

### FAMILY FRIENDLY ADVENTURES

[Little Things Farm](#)  
[Trowunna Wildlife Sanctuary](#)  
[Mole Creek Caves](#)  
[Empire Hotel Platypus Tours](#)  
[Lone Goose Farm Tours](#)  
[Meander River - Kayaking](#)  
[Fly Fishing](#)  
[Quamby Estate Golf](#)

## FOUND IN



## MEANDER VALLEY

# MEANDER INTO WESTBURY



3 day 2 night family friendly itinerary

## Day Three - Afternoon

Pack Up and continue your Tassie adventures or keep Hagley RV Farm Stay as your base as you continue to explore the North.

### Northern Adventures

Just 13 minutes from Westbury, the historic riverside town of Deloraine makes a great family outing, with galleries, craft shops and plenty of space for children to explore along the Meander River. Optional stops include the [Deloraine & Districts Folk Museum](#) for a glimpse into local history, or a visit to nearby [Truffle Farm Tasmania](#) to discover one of Tasmania's unique gourmet experiences - the kids will love the truffle dogs!

### City Adventures

Just 30 minutes from Westbury, the city of Launceston offers plenty of family-friendly adventures. Explore the spectacular Cataract Gorge with its walking trails, playground, chairlift and swimming pool, visit City Park to see the famous Japanese macaque monkeys, or enjoy a relaxing Tamar River cruise for a unique view of the region from the water.

### Southern Adventures

Travelling south from Westbury opens the door to some of Tasmania's most fascinating historic towns and landscapes. Explore the beautifully preserved Georgian village of Oatlands with its iconic Callington Mill, continue to Campbelltown to follow the quirky Red Bridge Brick Trail and discover colonial history, or take the dramatic Poatina Road into the highlands for sweeping views across the Central Plateau and Great Western Tiers.

## NEARBY MUST SEE

### [Short Walks](#)

[Platypus Tour](#) | [Trout Fishing](#)

[Meander Valley Vineyard](#)

[The Truffle Farm Tasmania](#)

[Christmas Hills Raspberry Farm](#)

[Anvers Chocolate Tasmania](#)

[Mole Creek Caves](#)

[Wandering Trout Restaurant & Bar](#)



MADE BY MEANDER VALLEY | MEANDER INTO WESTBURY

# THIS PATCH OF OURS

## TRAVELLER TIPS

**Wildlife on the Move:** Keep an eye out for native wildlife along roads and walking trails.

**Seasonal Hours:** Opening times may vary throughout the year — check ahead when planning your visit.

**Four Seasons in a Day:** Tasmania's weather can change quickly, so pack layers and sturdy walking shoes for waterfalls, rivers and outdoor exploring.

**Time Slows Here:** Westbury invites visitors to pause, wander and embrace the gentle pace of village life.

# MEANDER INTO WESTBURY



## EXPLORING THIS PATCH OF OURS?

There's a myriad of things to do and see, right here on your nomadic doorstep.



Scan here to visit our website for more to do here in Meander Valley!

Drop into our Visitor Centre for more information.  
98-100 Emu Bay Rd, Deloraine  
Open 9am-5pm, 7 days  
(winter hours may vary)  
(03) 6362 5280

### Photography Credits/Sources:

Pages 1, 2, 4, 6, 7, 8 & 10: All Social Origin.

Page 3: Hagley RV Farm Stay

Page 5: Convict Stocks & Locals: Social Origin, Christmas Hills Raspberry Farm: Danielle Prowse

Page 9: Local Produce: Social Origin, Little Marney's Gifts for Town & Country

Page 11: Jade Austen

Page 12: The Truffle Farm Tasmania: Jess Bond

All Pages: Meander Valley Place Brand

Supported by Meander Valley Council

A proud initiative of Meander Valley Business and Tourism Association

We acknowledge the traditional custodians of the land on which we live and work, the Palawa people, and pay our respects to their elders past, present, and emerging.



MADE BY MEANDER VALLEY | MEANDER INTO WESTBURY