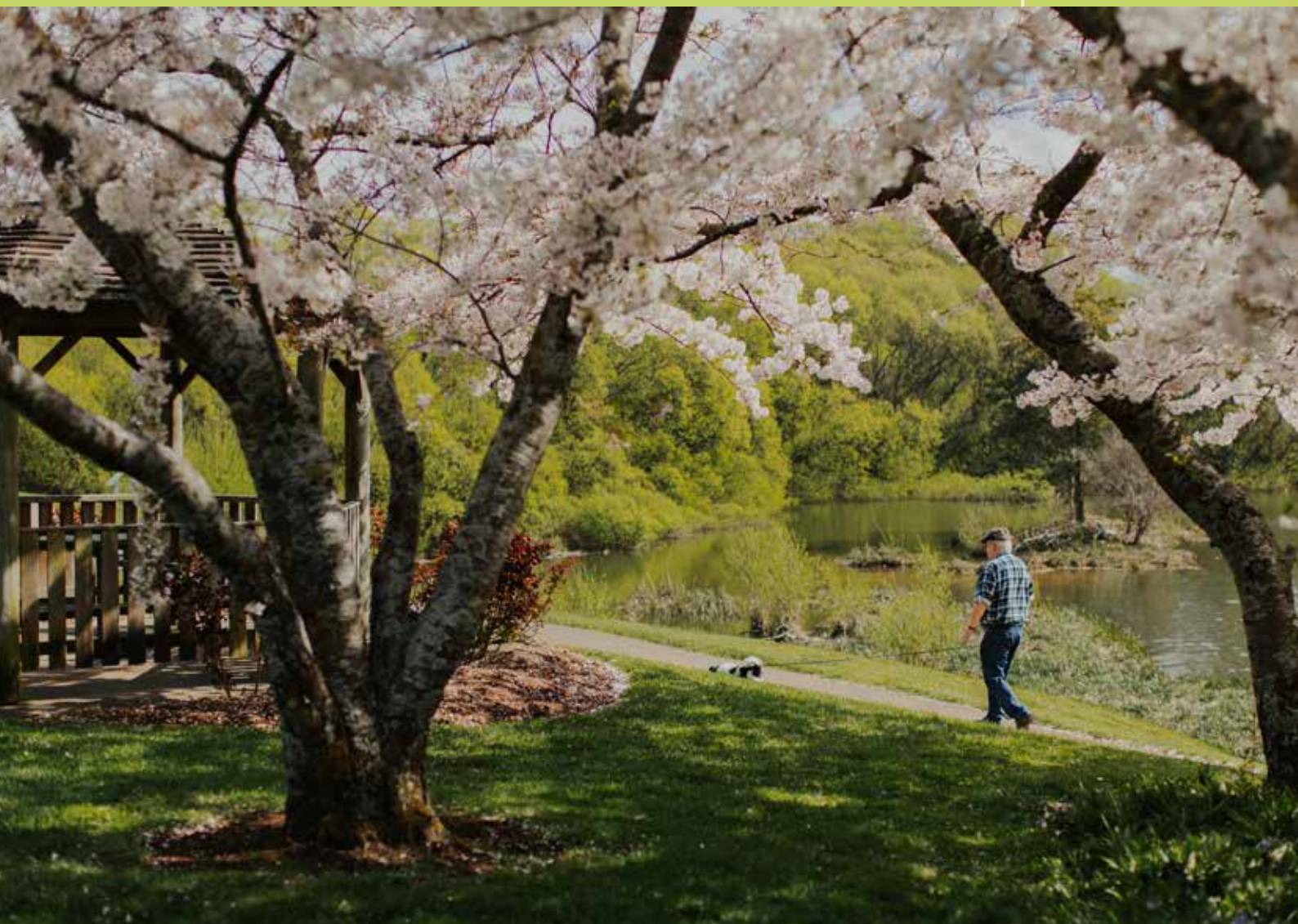




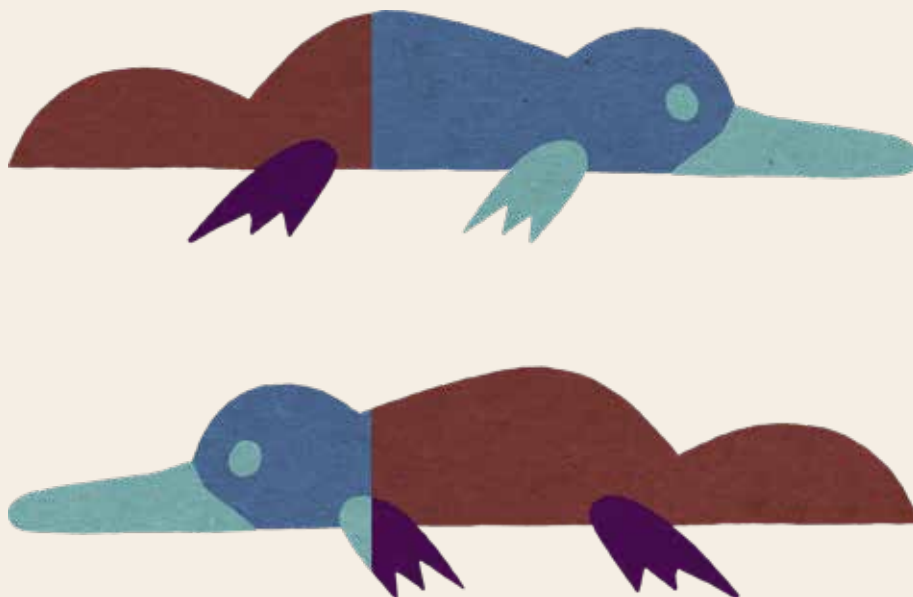
DISCOVER DELORRAINE

3 Day/2 Night Self-Drive Itinerary



Escape to the picturesque Short Walks Capital of Northern Tasmania with this perfect 3-day weekend getaway, designed for couples seeking the perfect combination of adventure, relaxation, nature and cultural discovery, whilst embracing the true essence of Tasmanian hospitality.

Deloraine, a vibrant small town nestled in the heart of Meander Valley offers an enchanting mix of inspiring arts and crafts, local history, breathtaking landscapes and delicious regional produce. Sitting amongst the background of the magnificent World Heritage Great Western Tiers/Kooparooona Niara, you can experience tranquil river views, scenic walking trails and an eclectic mix of art galleries and local foodie experiences. Deloraine is the ideal destination to spend your days exploring and discovering, and your nights unwinding and relaxing under the spectacular Tasmanian night skies. Just a short drive from Launceston or Devonport, yet a world away from the everyday, Deloraine invites you to embrace both adventure and serenity in equal measure.



HOW TO GET HERE

Driving to Deloraine couldn't be easier, making it the perfect choice for a relaxing escape. Just a scenic 40-minute drive from Launceston airport, Deloraine is conveniently located via the Bass Highway (A1), with alternative local routes offering stunning views of Tasmania's rural landscape and local villages. If you are arriving by sea aboard the Spirit of Tasmania into Devonport, Deloraine is just as accessible. The picturesque 45-minute drive south along the Bass Highway (A1) winds through rich agricultural country toward the foothills of the Great Western Tiers.

DAY ONE FOODIE ADVENTURES

Morning: *day one*

Begin your day with a visit to **Frank & Lotti Espresso Bar**, where you can enjoy a coffee and locally made pastries to kick-off your adventures. Make sure to indulge in one of their delicious Portuguese Tarts!

Just a quick 5 minute walk away is the **Great Western Tiers Visitor Information Centre**, staffed by local volunteers, who will ensure you leave armed with plenty of local travel tips, including a map of the area's Short Walks.

Take some extra time to step back into Tassie's past and explore the onsite **Folk Museum** followed by the captivating **Silk Yarns Exhibition**. A unique handmade art-piece, Yarns was created using numerous hand working techniques and showcases the landscapes, culture and heritage of the Meander Valley people.

Truffle Farm Tasmania



Silk Yarn Exhibition



Frank & Lotti Espresso Bar

WHERE TO STAY

The Empire Hotel Deloraine
Cedar Cottage Meander
The Chapel Deloraine
Meander Country Cabins
Blakes Manor
Naivasha Cottage
Wakefields
The Eco Cabin

Afternoon: day one

We are truly spoilt for choice with locally grown produce in Tasmania and Deloraine is no exception!

Wine lovers: Take time to indulge in a wine tasting and lunch at **Meander Valley Vineyard**, a picturesque spot just a five-minute drive from Deloraine. Tucked amongst the vineyards and apple trees, showcasing a range of cool climate wines the venue showcases, including Tasmania's only Baco Noir.

Nature Lovers: from Deloraine, drive ten minutes southwest to **Montana Falls Walk**, one of the region's renowned short walks. Take a mosey along the easy 40-minute round trip track.

Truffle lovers: If truffles are more your style, take a short ten-minute drive from Deloraine to the award-winning **Truffle Farm Tasmania**, a must-visit for both food lovers and nature enthusiasts. Be sure to book ahead for the truffle hunt experience and meet the famous truffle dog!



Return to Deloraine feeling refreshed and ready for the evenings adventures.

Pop into **Little Green Men Brewing Co.** located at The British Hotel, one of Deloraine's oldest buildings dating back to 1855, for a pint of house brewed beer or apple cider. As dusk falls, wander 5 minutes down the main street to **The Empire Hotel** to experience the magic of their sunset Platypus Tour - an unforgettable encounter with Tasmania's iconic wildlife.

TOP TIP

Have some extra time? Swing by the historic town of Westbury, a short 15-minute drive away & enjoy these local favourites.

Western Tiers Distillery - Lunch, Cocktails & Spirit Tasting.

Love Lucy Boots - Coffee Community & Wine Bar

Pearns Steam World - Tasmania's Steam-Powered History.





PRODUCE TIP

Pick up award winning sausages and local cuts from Bests Butchery, fresh sourdough from Frank & Lotti's and explore the range of locally grown produce at Meander Valley Fruit and Veg store.

Evening: day one

After your platypus adventures, indulge in a Tasmanian whisky and share your adventures with locals and fellow travellers at the bar before heading to the stunning **Cedar Cottage Meander**, located at the foot of Kooparoonia niara/Great Western Tiers.

Settle in by the open fire, surrounded by the tranquility of nature, unwind in the outdoor hot tub beneath the spectacular Tasmanian night skies, and enjoy a delicious evening meal with a local produce grazing platter from the **Deloraine Deli** - be sure to order your platter in advance.



DAY TWO

EXPLORING NATURE

LOCALS TIP

If you're in town on the first Saturday of the month, don't miss the Deloraine Market for a true taste of the community.

Produce, preserves and plenty of friendly faces.

Morning: day two

After a relaxing lie in, take full advantage of the incredible chef's kitchen at Cedar Cottage Meander and enjoy a home-prepared alfresco breakfast overlooking the mountains and valley. Help yourself to locally grown produce from the onsite seasonal organic veggie garden - 'Veg Mahal', including a variety of fruit, veggies and herbs depending on the time of year.

Drop by one of Deloraine's local cafés for a caffeine hit and takeaway lunch to fuel the day's nature adventures ahead of you.

Just a short 20-minute drive from Deloraine towards Mole Creek, discover the panoramic views of the Mersey River winding through a spectacular Gorge at **Tulampanga/Alum Cliffs**. On this short 40-minute return walk you will discover more about the local Aboriginal people and why this area was a sacred celebration place. Tulampanga/Alum Cliffs was a place of significant social and spiritual significance, the Tulampanga region of the Gog Range is rich in ochre, a material highly valued by the Tasmanian Aboriginal peoples.

Enjoy an early picnic lunch overlooking the spectacular Mersey River Gorge before heading off on your adventures to Mole Creek Caves.



Mole Creek Caves

Talampanga/Alum Cliffs

Afternoon: day two

Heading a further 15 minutes West, visit the Mole Creek Karst National Park, featuring an extensive landscape of caves, sinkholes, gorges, streams and springs that weave their way below the surface, these amazing and not to be missed natural attractions form part of the Tasmanian Wilderness World Heritage Area.



Mole Creek Caves

Depending upon how energetic you are feeling, choose one, or both of the guided **Mole Creek Caves Tours**. Marakoopa Cave is home to a starry display of glow worms, sparkling crystals, reflective pools and the spectacular Great Cathedral. King Solomons Cave features lavish colours and formations, with sparkling calcite decorating the chambers. These spectacular guided tours (approx. 45-mins each) are hosted by Tasmania Parks & Wildlife Service. Tours are very popular, so book ahead!

If you still have some energy and time left, take an hour and a half detour off the beaten track through the picturesque Mersey Forest, to discover the incredible **Devils Gullet**, a 40-minute short alpine walk to a lookout that overhangs sheer cliffs and the Fisher River Valley.

LOCALS TIP

Visit the Tassie Tiger Bar at the Mole Creek Pub and indulge in a Tassie Tiger Pie!

Waterfall lovers - visit hidden gem, Parsons Falls

If wildlife and staying above ground is more to your liking, take a scenic 20-minute drive north to **Trowunna Wildlife Sanctuary**, a place where nature and nurture blend. Known across the globe for its dedication to wildlife conservation, Trowunna offers more than just a visit—it offers a connection to Tasmania’s wildlife.

Included in the admission price, are three intimate, daily guided tours, where you’ll have opportunity to meet a Tasmanian Devil up close, cuddle a curious Wombat, and witness the powerful spectacle of a Devil’s social feeding—an unforgettable insight into the natural world of these remarkable animals.

This is not just a stop along the way—it’s a moment to slow down, breathe in the fresh country air, and feel the heartbeat of Tasmania’s wild heritage.



Trowunna Wildlife Park



Evening: day two

Head back towards Deloraine and stop in Mole Creek for a sundowner at the iconic Tassie Tiger Bar at the **Mole Creek Hotel**, before dinner at the **Wandering Trout Brewery** in Mole Creek. Make sure to reserve the Hosts' Table, where you'll be treated to a carefully curated multi-course chef's menu featuring local, ethically sourced ingredients. Swap stories at the shared table with fellow travellers and locals over delicious food, and exceptional local wines and beers, making for a truly memorable dining experience.

After dinner, take the road back to Deloraine and return to your accommodation and unwind in the cedar hot tub on your private deck, where you can enjoy stunning views of the mountains and watch the stars come to life. If you're lucky, you might even catch a glimpse of the Southern Aurora dancing across the sky.

EAT & DRINK LIKE LOCALS

[Bogan Road Distillery](#)

[Red Brick Road Cider](#)

[Little Green Men
Brewing Co.](#)

SHORT WALKS CAPITAL OF TASMANIA

[DEVILS GULLET](#) - 40 mins return - 1.2km (Grade 2)

[MONTANA FALLS](#) - 45 mins return - 1.8km (Grade 2)

[DELORAIN RIVER WALK](#) - 30 min circuit - 1.5km (Grade 1)

[LIFFY FALLS](#) - 45 min return - 2km (from upper car park),
3 hr return - 6km (from lower car park) - (Grade 2)

[PINE LAKE](#) - 30 mins return - 800m (Grade 1)

[Alum Cliffs/ Tulampanga](#) - 40 mins return - 1.6km (Grade 2)

DAY THREE

HERITAGE AND LOCAL ART

Morning: day three

Gather your luggage and new memories, before taking in the sweeping valley views one last time as you farewell the tranquillity of Cedar Cottage. Treat yourself to a delicious breakfast at Cycles @ The Empire before heading out to explore the heart of Deloraine. Take a leisurely couple of hours to stroll through the charming streets and discover the town's beautiful heritage buildings and sculpture trail.

Browse the range of unique Art and Craft galleries, showcasing locally made products, Deloraine is filled with an amazing array of artists, the perfect opportunity to purchase locally made art pieces to take home with you.

Don't miss the chance to follow the River Walk, a beautiful short walk looping around the riverbank and the **Sculpture Trail**, where you can immerse yourself in the town's vibrant artistic culture whilst inhaling the fresh valley air.

After working up an appetite, enjoy a relaxed lunch in one of Deloraine's many local eateries. A final riverside walk or gallery visit provides a gentle farewell before continuing on your Tasmanian journey.



Sculpture Trail



Deloraine Folk Museum



MADE BY MEANDER VALLEY





Afternoon: day three

Whether you're heading North or South, there's more to explore in the Meander Valley!

Heading South? Take a short eight-minute drive to **Little Things Farm** for a private couple's farm tour where you'll enjoy an unforgettable encounter with the animals. Or continue just a little further to Bogan Road Distillery and indulge in a warming whiskey tasting.



TOP TIP

Make sure to check ahead for seasonal events:

Deloraine Street Car Show
Tasmanian Craft Fair
Deloraine Pocket Park Events
Trail Graze Tasmania
Tasmanian Heirloom Festival
Hop to Harvest
Party in the Paddock
Agfest

All unique Tasmanian events that are worth planning your trip around!

Heading North? Don't miss the Tasting Trail! Drop in to inland salmon farm **41 South** before visiting **Christmas Hills Raspberry Farm, Ashgrove Cheese** and **Anvers Tasmania** for a true taste of the region's best produce.

Whether you're seeking adventure or simply a peaceful retreat, Deloraine offers something for every traveller. Let the enchanting beauty and warm hospitality of this town be your next escape. Deloraine - Live Life Like a Local



DISCOVER DELORAINE

SEASONALITY TIP

Visiting during the winter Off-Season?
Deloraine offers a peaceful retreat
with fewer crowds, making it the
perfect time to enjoy quiet walks, local
produce, and intimate encounters with
the region's wildlife and history.
Check in with local businesses
for opening hours
before you go!

Download the **Discover
Tasmania App** to keep
an eye on local pop-up
events and Tourism
Tasmanian Off Season
Offers!



Meander River

We acknowledge the traditional custodians of the land on which we live and work, the Palawa people, and pay our respects to their elders past, present, and emerging.

Photography Credits/Sources in order of appearance in this document:

Meander Valley Council, Social Origin, Chris Crerar, Meander Valley Council, Ash Thomson Photography, Meander Valley Vineyard, Natasha Mulhall, Natasha Mulhall, Natalie Brown, Tourism Tasmania & Graham Freeman, Jade Austen, Natasha Mulhall, Wandering Trout, Western Tiers Distillery, Kirby Nesbit Photography, GWTVIC, Social Origin, Danielle Prowse, Tourism Tasmania.

MADE BY MEANDER VALLEY • **DISCOVER DELORAINE**

A proud initiative of the [Meander Valley Business & Tourism Association](#)